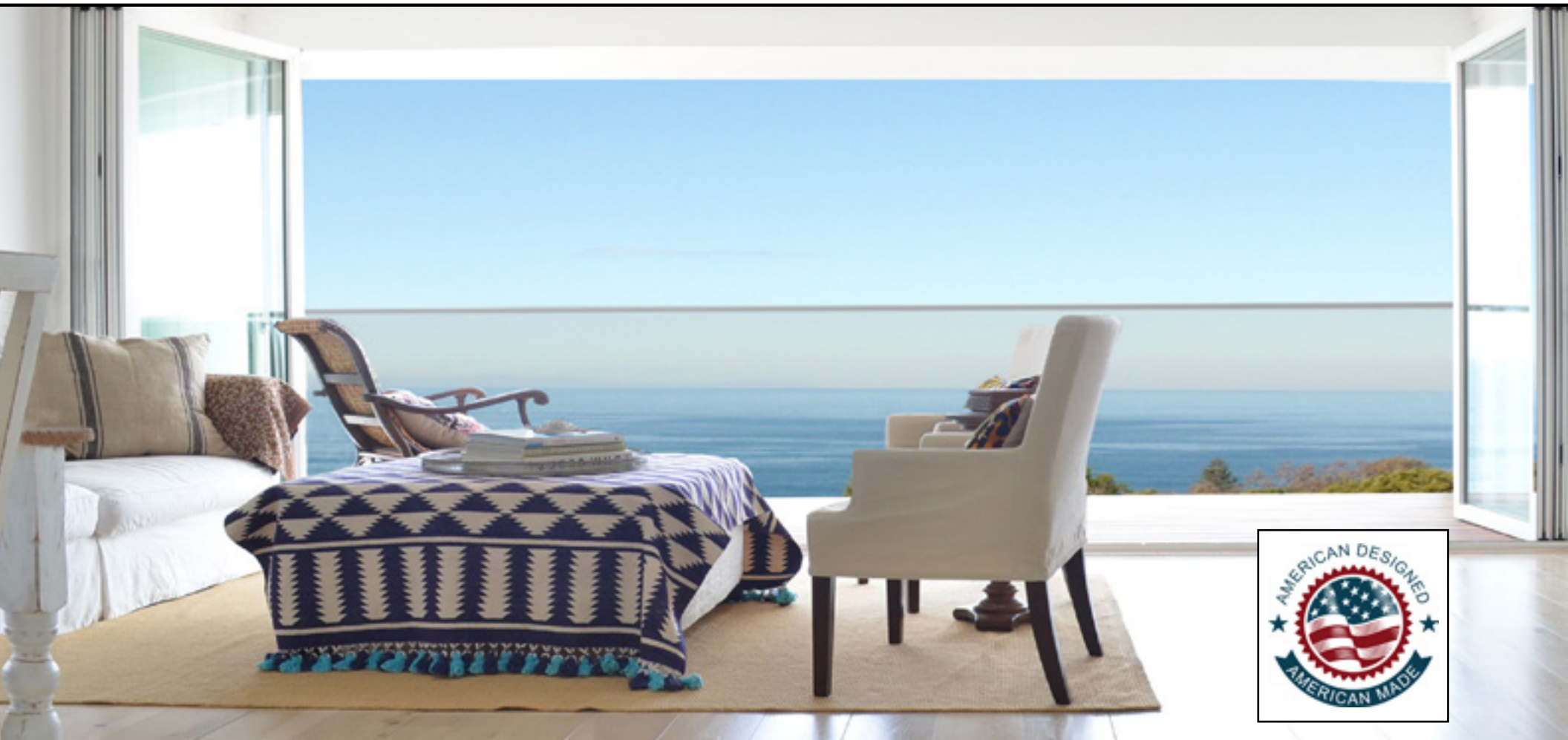


# Panoramic Doors



*It's a big world out there, see more of it with a Panoramic Door.*

760-722-1300  
[www.panoramicdoors.com](http://www.panoramicdoors.com)

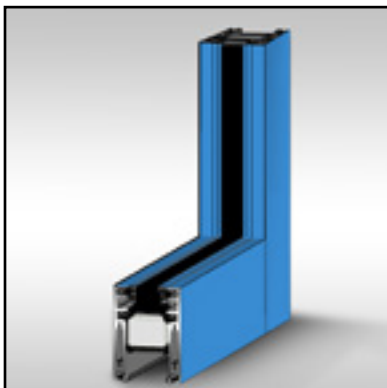


## ABSOLUTE VINYL SERIES DOOR

The Panoramic Absolute Series Vinyl Door is an aluminum reinforced vinyl door built in a stile and rail design. Unlike most vinyl doors that are constructed with fusion welded corners, our design incorporates mechanically connected corners that match the look of traditional wood doors giving it a refined appearance that is perfect for any home or office.

Built using the same patented award winning Magnaline System™ hardware as the Signature Series Aluminum Door, the Absolute Series Door is our more affordable version.

### FRAME CUT AWAY



### COLOR AND FINISH OPTIONS

#### Vinyl Color Options:

- White Vinyl
- Beige Vinyl

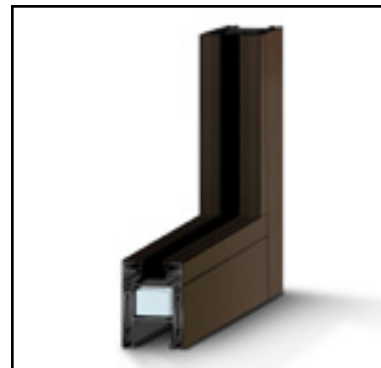


## SIGNATURE ALUMINUM with eeCore™

The Panoramic Signature Aluminum Series Door offers ultimate versatility and options. This energy efficient thermally broken door utilizes our eeCore™ (energy efficient Core) technology for optimal thermal performance. Now you can have the durability and beauty of aluminum while enjoying maximum comfort with energy savings.

Available in sizes up to 120 inches high and/or panel widths of 40 inches, the Signature Series doors can be built to fit any size opening no matter what the width.

### FRAME CUT AWAY



### COLOR AND FINISH OPTIONS

#### Aluminum Color Options:

- Clear Anodized
- 200+ RAL powder coat colors
- Custom match powder-coat colors

#### Wood Cladding:

- Standard Woods: Alder, Fir, White Oak
- Premium Woods: Cherry, Mahogany, Black Walnut

# energy efficient eeCore™ Energy Efficient Doors

The all new **eeCore™** energy efficient door by Panoramic Doors combines our unique design with “*Home Comfort*” materials to ensure your home or business are protected year round from the cold and heat outside. With **eeCore™** technology, your home will not only look great, it will feel great too!

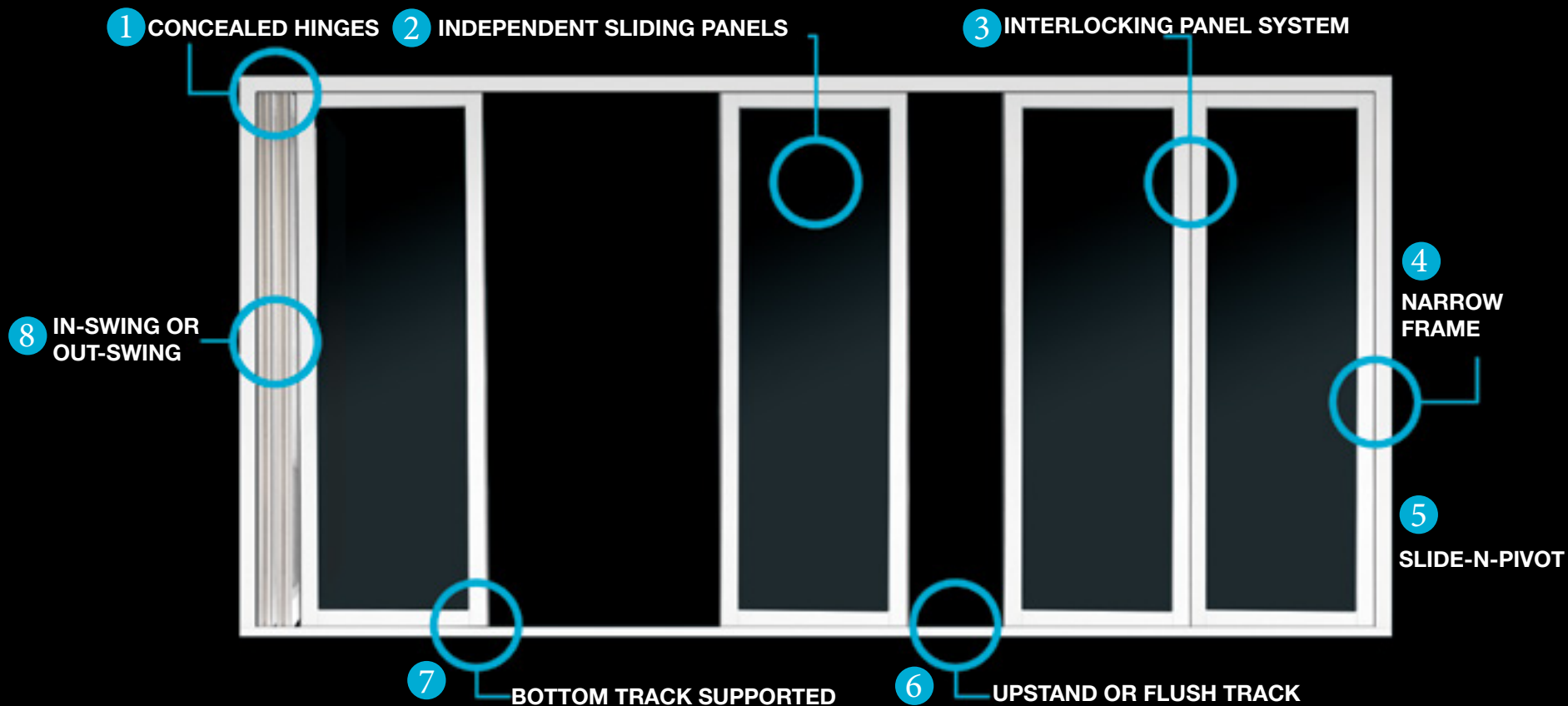
\*Our energy efficient doors and windows meet and/or exceed California Title 24 requirements.



**Aluminum: .32 U-Value\***  
**Vinyl: .29 U-Value\***

\*When using dual pane Low-e3 and argon





#### 1. CONCEALED HINGES:

All hinges/pivot points are concealed for a more pleasing aesthetics and architectural sight-lines.

#### 2. INDEPENDENT SLIDING PANELS:

No hinges, no binding, no sagging. Panoramic door panels glide with a smooth and easy functionality along the bottom track.

#### 3. INTERLOCKING PANEL SYSTEM:

Interlocking “tongue and groove” panels provide for security and performance against the elements.....without the need for additional locking mechanisms.

#### 4. NARROW FRAME:

Our narrow 3” (inside to outside) frame give you plenty of room to add a screen or blinds.

#### 5. SLIDE-N-PIVOT OPERATION:

Utilizing our innovative, patented Magnaline® hardware system, the door panels slide-n-pivot independently for easier operation.

#### 6. UP-STAND OR FLUSH TRACK:

Choose between the 3/4 up-stand track for maximum weather protection or the flush\* track for a low profile appearance.

Note: \*Flush track does not protect against water penetration

#### 7. BOTTOM TRACK SUPPORTED:

Rather than hanging from the header, our panels ride on the bottom track reducing the cost of engineering and special structural support.

#### 8. IN-SWING OR OUT-SWING:

Choose between in-swing or out-swing door operation.

\*Note: Nail-fin and Retro Outer Frame is available in out-swing only.

# HOW THE PANORAMIC DOOR SYSTEM OPERATES



## STEP 1: OPEN ACCESS DOOR

Turn handle to open the access door.



## STEP 2: SLIDE PANEL AND PIVOT TO OPEN

Slide the next panel over toward the open access door. When in position, the sliding panel will click into place and pivot open.



## STEP 3: CONTINUE WITH REMAINING PANELS

Continue the same process with the remaining panels.



## A DOOR FOR ALL USES

Designed with the modern home and business in mind, the Panoramic Door is a versatile system that works perfectly for the home, office or restaurant setting.

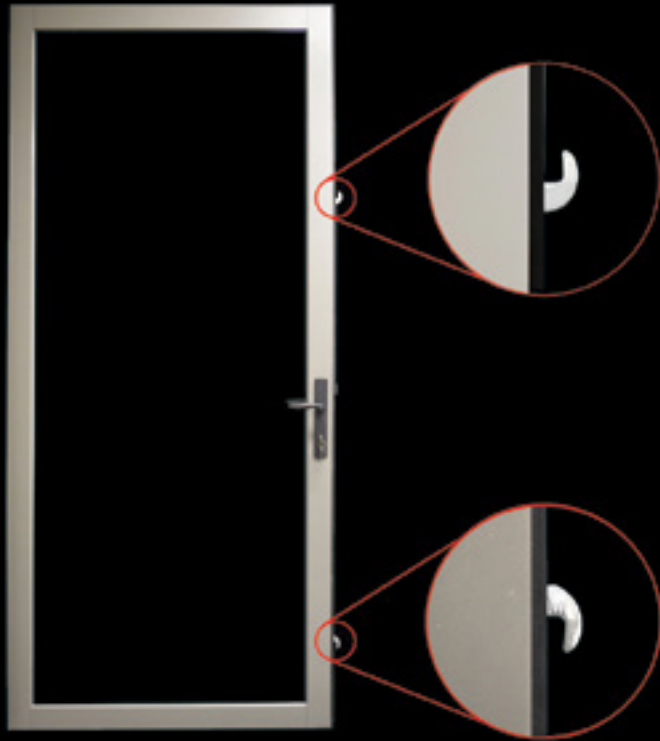
Big open spaces are accentuated with the Panoramic Door. But it does not stop there. Because Panoramic Door is a hinge-less system with free floating panels, you control the opening to fit your needs.

We stripped away all the constraints inherent to the “hinged” systems. Because we do not have panel-to-panel hinges, you get to choose how your door opens. With the Panoramic Door you ( not the door ) get to decide how many panels are open or closed at any one time.

Experience the ultimate in flexibility and ease of use with both our vinyl and aluminum doors with eeCore™ total comfort.



## MULTI-POINT LOCKING



All of our Panoramic Door Systems come standard with a multi-point locking system on each access door. The sliding panels integrate with the access door to provide security.

## HARDWARE OPTIONS



London  
Oil Rubbed Bronze



London  
Brushed Nickel



New York  
Oil Rubbed Bronze



New York  
Brushed Nickel



Sheffield  
Satin Nickel



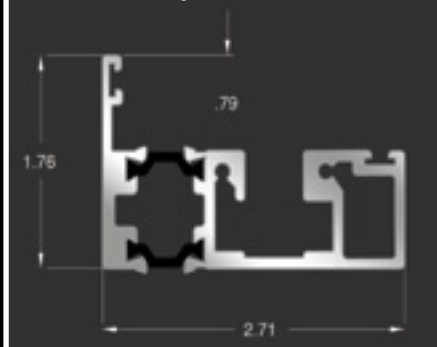
Sheffield  
Bronze



Miami  
White

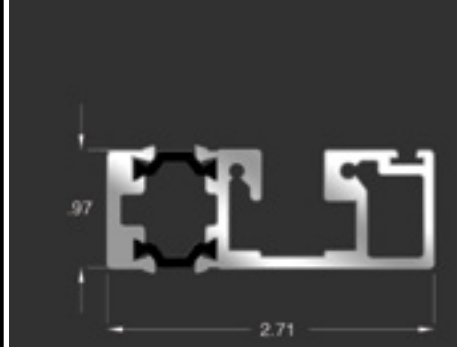
## TRACK DETAILS

Bottom Track: Up-stand Track



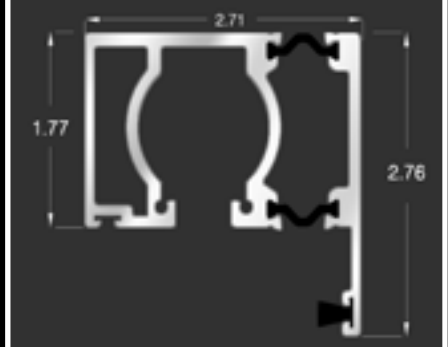
Offers best water barrier.  
Recommended for most applications.

Bottom Track: Flush Track



Lowest threshold.  
Important: The "flush track" does not protect against  
water and wind infiltration.

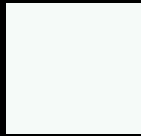
Top Track



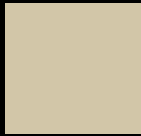
# FINISH OPTIONS

## ABSOLUTE VINYL SERIES DOOR

### VINYL COLOR OPTIONS



WHITE



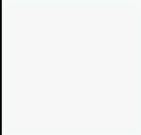
BEIGE

## SIGNATURE ALUMINUM SERIES DOOR

### STANDARD COLORS

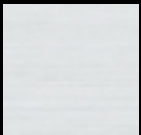


STATUARY  
BRONZE



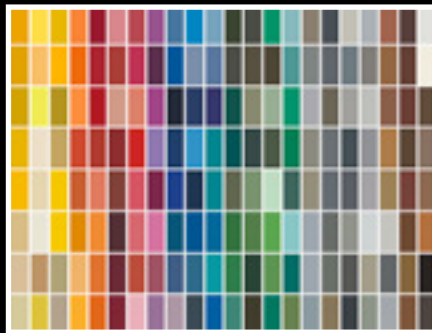
APOLLO  
WHITE

### AVAILABLE OPTION



CLEAR ANODIZED

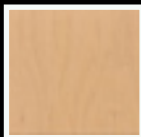
### RAL & CUSTOM COLORS



Color not listed? No problem! When your project requires a color that is outside the above listed color selection, send us sample of the color you need and we will do a custom color match!\*

\*Additional charges apply

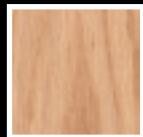
### WOOD CLADDING



ALDER



FIR



WHITE OAK



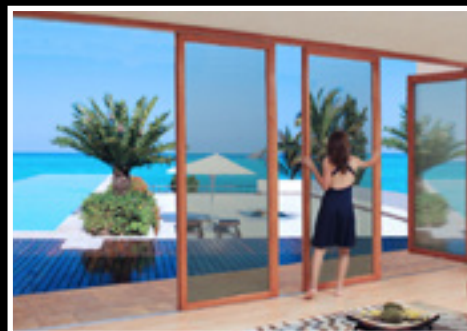
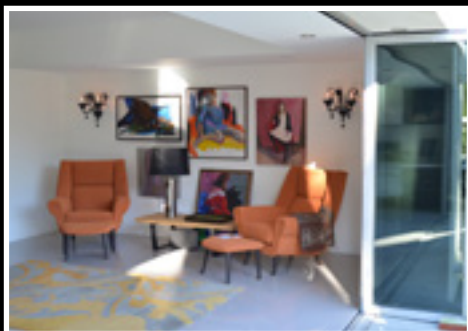
CHERRY



MAHOGANY



BLACK  
WALNUT



# AWARD WINNING INNOVATION



glass  
magazine  
awards

2013 Most Innovative Hardware

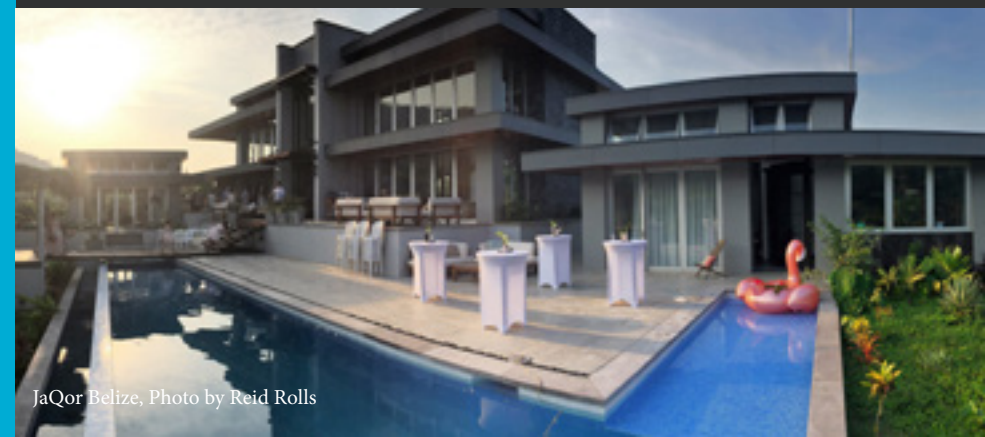


Window & Door  
CRYSTAL ACHIEVEMENT  
2014 Most Innovative Door



Window & Door  
CRYSTAL ACHIEVEMENT  
2014 Most Innovative Door Component

The Panoramic Door has been awarded multiple awards for our "Innovative" Design and Technology. With the Panoramic Door you are getting a state of the art door with unique features unlike any other.



JaQor Belize, Photo by Reid Rolls

## PANORAMIC DOOR SHOWROOMS

### CALIFORNIA SHOWROOMS

**San Diego, CA**  
**Corporate Office and Factory**  
2515 Industry St  
Oceanside, CA 92054  
Main: 760-722-1250  
Sales: 760-722-1300

**Burlingame, CA**  
980 David Rd, Suite B  
Burlingame, CA 94010  
760-722-1300

**Los Angeles, CA**  
947 North La Cienega Blvd  
West Hollywood, CA 90069  
760-722-1300

**Orange County, CA**  
682 N. Pacific Coast Hwy  
Laguna Beach, CA 92651  
760-722-1300

**San Francisco, CA**  
SF Design Gallery  
101 Henry Adams St, Suite 317  
San Francisco, CA 94010  
760-722-1300

### NATIONAL SHOWROOMS

**Scottsdale, AZ**  
15455 N. Greenway-Hayden Loop  
Unit C-11  
Scottsdale, AZ 85260  
480-991-9933

**Kansas City, MO**  
Mobile Showroom  
We come to you!  
913-940-7401

**Las Vegas, NV**  
Mobile Showroom  
Town Square Las Vegas  
6539 S Las Vegas Blvd, #113  
Las Vegas, NV 8911  
702-883-7955

**Reno, NV**  
340 Western Rd, Unit #16  
Reno, NV 89506  
775.742.3364

**Austin, TX**  
11100 Metric Blvd, Suite 100B  
Austin, TX 78758  
760-722-1300

**Dallas & Houston, TX**  
Mobile Showroom  
We come to you!  
760-722-1300

**Seattle, WA**  
264 SW 43rd St.  
Building 3  
Renton, WA 98057  
253-236-4497

## INSTALLATION MANUALS & VIDEOS



### Installation Manual:

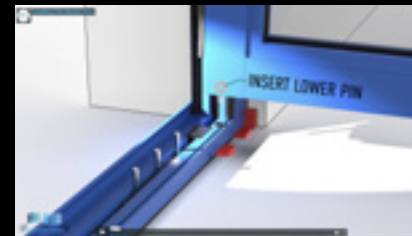
<http://panoramicdoors.com/installation-manuals>

[www.panoramicdoors.com](http://www.panoramicdoors.com)



For more information  
visit us at:

[www.panoramicdoors.com](http://www.panoramicdoors.com)  
or call: 760-722-1300



### Installation Videos:

<http://panoramicdoors.com/installation-videos/>

